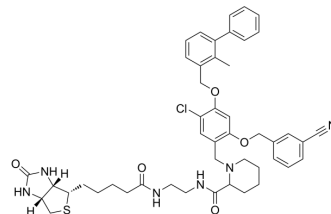


SWS1

Cat. No.:	HY-155681
CAS No.:	2922115-32-8
Molecular Formula:	C ₄₇ H ₅₃ ClN ₆ O ₅ S
Molecular Weight:	849.48
Target:	Monoamine Oxidase; PD-1/PD-L1
Pathway:	Neuronal Signaling; Immunology/Inflammation
Storage:	Please store the product under the recommended conditions in the Certificate of Analysis.



BIOLOGICAL ACTIVITY

Description	SWS1 is a d-(+)-biotin-conjugated PD-L1 inhibitor (IC ₅₀ : 1.8 nM) with anticancer activity. SWS1 can increase the number of tumor-infiltrating lymphocytes and exhibit anti-tumor efficacy in the B16-F10 mouse model (TGI=66.1%) ^[1] .
IC₅₀ & Target	IC ₅₀ : 1.8 nM (PD-1/PD-L1) ^[1]

REFERENCES

[1]. Ding Z, et al. Discovery of Novel d-(+)-Biotin-Conjugated Resorcinol Dibenzyl Ether-Based PD-L1 Inhibitors for Targeted Cancer Immunotherapy. *J Med Chem.* 2023 Aug 10;66(15):10364-10380..

Caution: Product has not been fully validated for medical applications. For research use only.

Tel: 609-228-6898

Fax: 609-228-5909

E-mail: tech@MedChemExpress.com

Address: 1 Deer Park Dr, Suite Q, Monmouth Junction, NJ 08852, USA