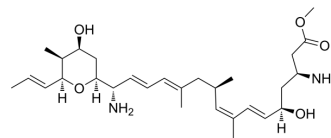


CRM1-IN-2

| | |
|--------------------|---|
| Cat. No.: | HY-155972A |
| Molecular Formula: | C ₂₉ H ₄₈ N ₂ O ₅ |
| Molecular Weight: | 504.7 |
| Target: | CRM1; Apoptosis |
| Pathway: | Membrane Transporter/Ion Channel; Apoptosis |
| Storage: | Please store the product under the recommended conditions in the Certificate of Analysis. |



BIOLOGICAL ACTIVITY

Description

CRM1-IN-2 (Compound KL2) is a noncovalent CRM1 inhibitor. CRM1-IN-2 localizes CRM1 in the nuclear periphery, depletes nuclear CRM1, and inhibits CRM1-mediated nuclear export. CRM1-IN-2 inhibits growth of colorectal cancer cells, and induces apoptosis^[1].

REFERENCES

[1]. Jian L, et al. Discovery of Aminoratjadone Derivatives as Potent Noncovalent CRM1 Inhibitors. J Med Chem. 2023 Aug 18.

Caution: Product has not been fully validated for medical applications. For research use only.

Tel: 609-228-6898

Fax: 609-228-5909

E-mail: tech@MedChemExpress.com

Address: 1 Deer Park Dr, Suite Q, Monmouth Junction, NJ 08852, USA