

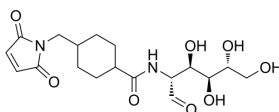
Glucose-maleimide

Cat. No.: HY-156518
CAS No.: 2093979-63-4
Batch No.: 286938
Chemical Name: D-Glucose, 2-deoxy-2-[[[4-[(2,5-dihydro-2,5-dioxo-1H-pyrrol-1-yl)methyl]cyclohexyl]carbonyl]amino]-

PHYSICAL AND CHEMICAL PROPERTIES

Molecular Formula: C₁₈H₂₆N₂O₈
Molecular Weight: 398.41
Storage: 4°C, sealed storage, away from moisture and light
* In solvent : -80°C, 6 months; -20°C, 1 month (sealed storage, away from moisture and light)

Chemical Structure:



ANALYTICAL DATA

Appearance: White to off-white (Solid)
¹H NMR Spectrum: Consistent with structure
MS: Consistent with structure
Purity (HPLC): 99.72%
Conclusion: The product has been tested and complies with the given specifications.

Caution: Product has not been fully validated for medical applications. For research use only.

Tel: 609-228-6898

Fax: 609-228-5909

E-mail: tech@MedChemExpress.com

Address: 1 Deer Park Dr, Suite Q, Monmouth Junction, NJ 08852, USA