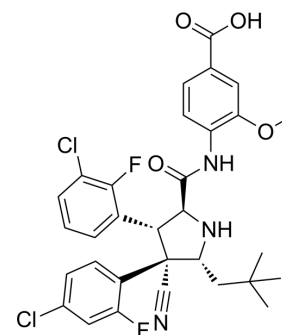


## Idasanutlin (enantiomer)

Cat. No.:	HY-15676A		
Molecular Formula:	C <sub>31</sub> H <sub>29</sub> Cl <sub>2</sub> F <sub>2</sub> N <sub>3</sub> O <sub>4</sub>		
Molecular Weight:	616.48		
Target:	Others		
Pathway:	Others		
Storage:	Powder	-20°C	3 years
		4°C	2 years
	In solvent	-80°C	6 months
		-20°C	1 month



### BIOLOGICAL ACTIVITY

#### Description

Idasanutlin enantiomer is the isomer of Idasanutlin (HY-15676), and can be used as an experimental control. Idasanutlin (RG7388) is a potent and selective MDM2 antagonist, inhibiting p53-MDM2 binding, with an IC<sub>50</sub> of 6 nM.

### REFERENCES

- [1]. Ding Q, et al. Discovery of RG7388, a potent and selective p53-MDM2 inhibitor in clinical development. *J Med Chem.* 2013 Jul 25;56(14):5979-83.
- [2]. Higgins B, et al. Preclinical optimization of MDM2 antagonist scheduling for cancer treatment by using a model-based approach. *Clin Cancer Res.* 2014, 20(14), 3742-3752.

**Caution: Product has not been fully validated for medical applications. For research use only.**

Tel: 609-228-6898

Fax: 609-228-5909

E-mail: tech@MedChemExpress.com

Address: 1 Deer Park Dr, Suite Q, Monmouth Junction, NJ 08852, USA