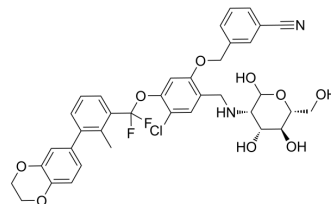


## PD-1-IN-25

Cat. No.:	HY-157055
CAS No.:	2413100-40-8
Molecular Formula:	C <sub>37</sub> H <sub>35</sub> ClF <sub>2</sub> N <sub>2</sub> O <sub>9</sub>
Molecular Weight:	725.13
Target:	PD-1/PD-L1
Pathway:	Immunology/Inflammation
Storage:	Please store the product under the recommended conditions in the Certificate of Analysis.



## BIOLOGICAL ACTIVITY

### Description

PD-1-IN-25 (compound 43) is a potent PD-1/PD-L1 interaction inhibitor with an IC<sub>50</sub> value of 10.2 nM in the HTRF assay. PD-1-IN-25 can promote CD8<sup>+</sup> T cell activation through inhibiting PD-1/PD-L1 cellular signaling. PD-1-IN-25 delays the tumor growth<sup>[1]</sup>.

## REFERENCES

[1]. Zilan Song, et al. Design, Synthesis, and Pharmacological Evaluation of Biaryl-Containing PD-1/PD-L1 Interaction Inhibitors Bearing a Unique Difluoromethyleneoxy Linkage. *J Med Chem.* 2021 Nov 25;64(22):16687-16702.

**Caution: Product has not been fully validated for medical applications. For research use only.**

Tel: 609-228-6898

Fax: 609-228-5909

E-mail: tech@MedChemExpress.com

Address: 1 Deer Park Dr, Suite Q, Monmouth Junction, NJ 08852, USA