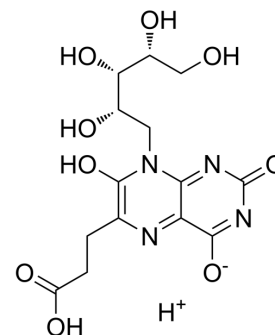


Photolumazine I

Cat. No.:	HY-157282
Molecular Formula:	C ₁₄ H ₁₈ N ₄ O ₉
Molecular Weight:	386.31
Target:	Others
Pathway:	Others
Storage:	Please store the product under the recommended conditions in the Certificate of Analysis.



BIOLOGICAL ACTIVITY

Description

Photolumazine I (PLI) is a vitamin B-based hapten. Photolumazine I can activate Mucosal-associated Invariant T clones^[1].

REFERENCES

[1]. Corbett AJ, et al. Antigen Recognition by MR1-Reactive T Cells; MAIT Cells, Metabolites, and Remaining Mysteries. *Front Immunol.* 2020;11:1961. Published 2020 Aug 27.

Caution: Product has not been fully validated for medical applications. For research use only.

Tel: 609-228-6898

Fax: 609-228-5909

E-mail: tech@MedChemExpress.com

Address: 1 Deer Park Dr, Suite Q, Monmouth Junction, NJ 08852, USA