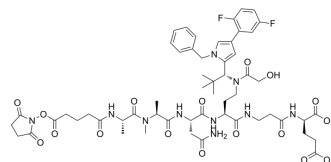


## NHS-Ala-Ala-Asn-active metabolite

<b>Cat. No.:</b>	HY-157338
<b>CAS No.:</b>	2231135-69-4
<b>Molecular Formula:</b>	C <sub>56</sub> H <sub>72</sub> F <sub>2</sub> N <sub>10</sub> O <sub>17</sub>
<b>Molecular Weight:</b>	1195.22
<b>Target:</b>	ADC Linker; Kinesin
<b>Pathway:</b>	Antibody-drug Conjugate/ADC Related; Cell Cycle/DNA Damage; Cytoskeleton
<b>Storage:</b>	Please store the product under the recommended conditions in the Certificate of Analysis.



### BIOLOGICAL ACTIVITY

<b>Description</b>	NHS-Ala-Ala-Asn-active metabolite is a cleavable antibody-drug conjugate (ADC) linker for synthesis of kinesin spindle protein (KSP)inhibitor <sup>[1]</sup> .
--------------------	--

### REFERENCES

[1]. Lerchen HG, et al. Tailored Linker Chemistries for the Efficient and Selective Activation of ADCs with KSPi Payloads. *Bioconjug Chem.* 2020;31(8):1893-1898.

**Caution: Product has not been fully validated for medical applications. For research use only.**

Tel: 609-228-6898

Fax: 609-228-5909

E-mail: [tech@MedChemExpress.com](mailto:tech@MedChemExpress.com)

Address: 1 Deer Park Dr, Suite Q, Monmouth Junction, NJ 08852, USA