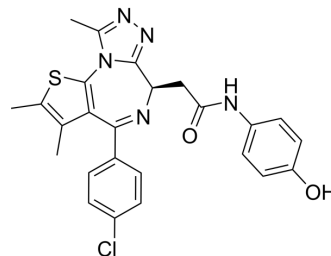


(R)-Birabresib

Cat. No.:	HY-15743A		
CAS No.:	1983196-25-3		
Molecular Formula:	C ₂₅ H ₂₂ ClN ₅ O ₂ S		
Molecular Weight:	491.99		
Target:	Others		
Pathway:	Others		
Storage:	Powder	-20°C	3 years
		4°C	2 years
	In solvent	-80°C	6 months
		-20°C	1 month



SOLVENT & SOLUBILITY

In Vitro

DMSO : 200 mg/mL (406.51 mM; Need ultrasonic)

Concentration	Solvent	Mass		
		1 mg	5 mg	10 mg
Preparing Stock Solutions	1 mM	2.0326 mL	10.1628 mL	20.3256 mL
	5 mM	0.4065 mL	2.0326 mL	4.0651 mL
	10 mM	0.2033 mL	1.0163 mL	2.0326 mL

Please refer to the solubility information to select the appropriate solvent.

In Vivo

- Add each solvent one by one: 10% DMSO >> 40% PEG300 >> 5% Tween-80 >> 45% saline
Solubility: ≥ 5 mg/mL (10.16 mM); Clear solution
- Add each solvent one by one: 10% DMSO >> 90% (20% SBE-β-CD in saline)
Solubility: ≥ 5 mg/mL (10.16 mM); Clear solution
- Add each solvent one by one: 10% DMSO >> 90% corn oil
Solubility: ≥ 5 mg/mL (10.16 mM); Clear solution

BIOLOGICAL ACTIVITY

Description

(R)-Birabresib is the isomer of Birabresib (HY-15743), and can be used as an experimental control. Birabresib (OTX-015) is a potent bromodomain (BRD2/3/4) inhibitor with IC₅₀s ranging from 92 to 112 nM.

REFERENCES

- [1]. Marie-Magdelaine Coudé, et al. BET inhibitor OTX015 targets BRD2 and BRD4 and decreases c-MYC in acute leukemia cells. *Oncotarget*. 2015 Jul 10; 6(19): 17698–17712.

[2]. Lu P, et al. The BET inhibitor OTX015 reactivates latent HIV-1 through P-TEFb. *Sci Rep.* 2016 Apr 12;6:24100

[3]. Vázquez R, et al. The bromodomain inhibitor OTX015 (MK-8628) exerts anti-tumor activity in triple-negative breast cancer models as single agent and in combination with RAD001. *Oncotarget.* 2017 Jan 31;8(5):7598-7613.

[4]. J. Kay Noel, et al. Abstract C244: Development of the BET bromodomain inhibitor OTX015. *Mol Cancer Ther* November 2013 12; C244.

Caution: Product has not been fully validated for medical applications. For research use only.

Tel: 609-228-6898

Fax: 609-228-5909

E-mail: tech@MedChemExpress.com

Address: 1 Deer Park Dr, Suite Q, Monmouth Junction, NJ 08852, USA