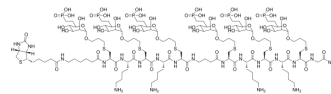


Biotin- ϵ Nle-CKCKC- γ Abu-CKCKCG-NH₂ (Cys modified with M6Pn)

Cat. No.:	HY-158033
Molecular Formula:	C ₁₂₄ H ₂₃₀ N ₂₀ O ₆₃ P ₆ S ₇
Molecular Weight:	3419.55
Target:	LYTACs
Pathway:	PROTAC
Storage:	Please store the product under the recommended conditions in the Certificate of Analysis.



BIOLOGICAL ACTIVITY

Description

Biotin- ϵ Nle-CKCKC- γ Abu-CKCKCG-NH₂ (Compound 24, Cys modified with M6Pn) is a mannose-6-phosphate (M6Pn)-peptide conjugate capable of binding to targeted ligands of various proteins and successfully internalizing and degrading them through M6PR. Biotin- ϵ Nle-CKCKC- γ Abu-CKCKCG-NH₂ can be utilized in the research of lysosomal targeting chimeras (LYTACs) based on M6Pn^[1].

REFERENCES

[1]. Stevens CM, et al. Development of Oligomeric Mannose-6-phosphonate Conjugates for Targeted Protein Degradation. ACS Med Chem Lett. 2023;14(6):719-726. Published 2023 Mar 3.

Caution: Product has not been fully validated for medical applications. For research use only.

Tel: 609-228-6898

Fax: 609-228-5909

E-mail: tech@MedChemExpress.com

Address: 1 Deer Park Dr, Suite Q, Monmouth Junction, NJ 08852, USA