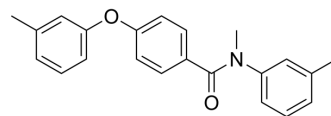


## 11 $\beta$ -HSD2-IN-2

Cat. No.:	HY-160618
CAS No.:	1834601-37-4
Molecular Formula:	C <sub>22</sub> H <sub>21</sub> NO <sub>2</sub>
Molecular Weight:	331.41
Target:	11 $\beta$ -HSD
Pathway:	Metabolic Enzyme/Protease
Storage:	Please store the product under the recommended conditions in the Certificate of Analysis.



### BIOLOGICAL ACTIVITY

<b>Description</b>	11 $\beta$ -HSD2-IN-2 (compound 3) is a selective inhibitor for 17 $\beta$ -hydroxysteroid dehydrogenase type 2 (17 $\beta$ -HSD2) with an IC <sub>50</sub> of 300 nM <sup>[1]</sup> .								
<b>IC<sub>50</sub> &amp; Target</b>	IC <sub>50</sub> : 300 nM (17 $\beta$ -HSD2 Inhibitor); 16100 nM (17 $\beta$ -HSD1 Inhibitor)								
<b>In Vitro</b>	<p>11<math>\beta</math>-HSD2-IN-2 (0-100 <math>\mu</math>M) exhibits a moderate cytotoxicity in HEK293 cells with a LD<sub>50</sub> of about 25 <math>\mu</math>M<sup>[1]</sup>. MCE has not independently confirmed the accuracy of these methods. They are for reference only.</p> <p>Cell Viability Assay<sup>[1]</sup></p> <table border="1"> <tr> <td>Cell Line:</td> <td>HEK293</td> </tr> <tr> <td>Concentration:</td> <td>0-100 <math>\mu</math>M</td> </tr> <tr> <td>Incubation Time:</td> <td>66 h</td> </tr> <tr> <td>Result:</td> <td>Decreased cell viability in a dose-dependent manner.</td> </tr> </table>	Cell Line:	HEK293	Concentration:	0-100 $\mu$ M	Incubation Time:	66 h	Result:	Decreased cell viability in a dose-dependent manner.
Cell Line:	HEK293								
Concentration:	0-100 $\mu$ M								
Incubation Time:	66 h								
Result:	Decreased cell viability in a dose-dependent manner.								

### REFERENCES

[1]. Gargano EM, et al., Addressing cytotoxicity of 1,4-biphenyl amide derivatives: Discovery of new potent and selective 17 $\beta$ -hydroxysteroid dehydrogenase type 2 inhibitors. Bioorg Med Chem Lett. 2016 Jan 1;26(1):21-4.

**Caution: Product has not been fully validated for medical applications. For research use only.**

Tel: 609-228-6898

Fax: 609-228-5909

E-mail: tech@MedChemExpress.com

Address: 1 Deer Park Dr, Suite Q, Monmouth Junction, NJ 08852, USA