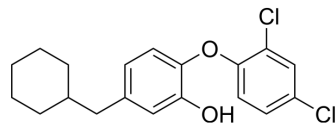


JPL

Cat. No.:	HY-160653
CAS No.:	952588-18-0
Molecular Formula:	C ₁₉ H ₂₀ Cl ₂ O ₂
Molecular Weight:	351.27
Target:	Bacterial
Pathway:	Anti-infection
Storage:	Please store the product under the recommended conditions in the Certificate of Analysis.



BIOLOGICAL ACTIVITY

Description	JPL is a InhA-cofactor-ligand 3FNG inhibitor, and can be used for study of tuberculosis ^[1] .
--------------------	--

REFERENCES

[1]. da Silva Lima CH, et al. Aqueous Molecular Dynamics Simulations of the M. tuberculosis Enoyl-ACP Reductase-NADH System and Its Complex with a Substrate Mimic or Diphenyl Ethers Inhibitors. Int J Mol Sci. 2015;16(10):23695-23722. Published 2015 Oct 7.

Caution: Product has not been fully validated for medical applications. For research use only.

Tel: 609-228-6898

Fax: 609-228-5909

E-mail: tech@MedChemExpress.com

Address: 1 Deer Park Dr, Suite Q, Monmouth Junction, NJ 08852, USA