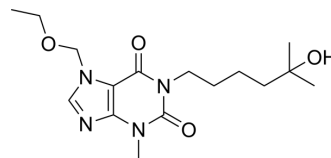


Torbafylline

Cat. No.:	HY-160864
CAS No.:	105102-21-4
Molecular Formula:	C ₁₆ H ₂₆ N ₄ O ₄
Molecular Weight:	338.4
Target:	Phosphodiesterase (PDE)
Pathway:	Metabolic Enzyme/Protease
Storage:	Please store the product under the recommended conditions in the Certificate of Analysis.



BIOLOGICAL ACTIVITY

Description

Torbafylline is a PDE inhibitor. Torbafylline mitigates protein breakdown in rat skeletal muscle following burns by activating the PDE4/cAMP/EPAC/PI3K/Akt signaling pathway. Torbafylline suppresses the increased ubiquitin-proteasome-dependent protein degradation observed in the skeletal muscles of rats susceptible to cancer and sepsis^[1].

REFERENCES

[1]. Okyayuz-Baklouti I. The effects of torbafylline on blood flow, pO₂ and function of rat ischaemic skeletal muscle. *Eur J Pharmacol.* 1989 Jul 4;166(1):75-86.

Caution: Product has not been fully validated for medical applications. For research use only.

Tel: 609-228-6898

Fax: 609-228-5909

E-mail: tech@MedChemExpress.com

Address: 1 Deer Park Dr, Suite Q, Monmouth Junction, NJ 08852, USA