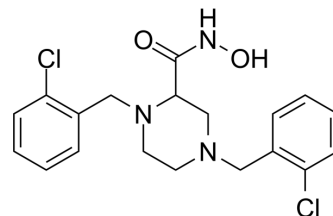


BChE-IN-26

Cat. No.:	HY-161156
Molecular Formula:	C ₁₉ H ₂₁ Cl ₂ N ₃ O ₂
Molecular Weight:	394.29
Target:	Cholinesterase (ChE)
Pathway:	Neuronal Signaling
Storage:	Please store the product under the recommended conditions in the Certificate of Analysis.



BIOLOGICAL ACTIVITY

Description	BChE-IN-26 (Compound 7b) is a selective AChE and BChE inhibitor with K _i value of 35 μM and 1.6 μM. BChE-IN-26 has cytotoxicity to human neuroblastoma (SH-SY5Y) cell line. BChE-IN-26 can be used for the research of Alzheimer's disease ^[1] .	
IC₅₀ & Target	AChE 35 μM (K _i)	BChE 1.6 μM (K _i)

REFERENCES

[1]. Soliman AM, et al. Piperazine-2-carboxylic acid derivatives as MTDLs anti-Alzheimer agents: Anticholinesterase activity, mechanistic aspect, and molecular modeling studies. *Bioorg Chem.* 2024 Jan;142:106916.

Caution: Product has not been fully validated for medical applications. For research use only.

Tel: 609-228-6898

Fax: 609-228-5909

E-mail: tech@MedChemExpress.com

Address: 1 Deer Park Dr, Suite Q, Monmouth Junction, NJ 08852, USA