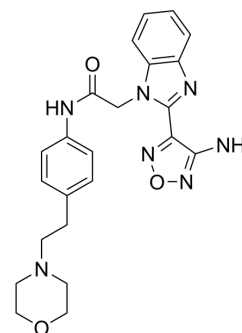


## S16-1029

Cat. No.:	HY-161331
CAS No.:	2653349-51-8
Molecular Formula:	C <sub>23</sub> H <sub>25</sub> N <sub>7</sub> O <sub>3</sub>
Molecular Weight:	447.49
Target:	Cholinesterase (ChE)
Pathway:	Neuronal Signaling
Storage:	Please store the product under the recommended conditions in the Certificate of Analysis.



### BIOLOGICAL ACTIVITY

Description	S16-1029 is a selective and orally active butyrylcholinesterase (BChE) inhibitor with IC <sub>50</sub> s of 11.35 nM and 48.1 nM for eqBChE and hBChE, respectively. S16-1029 could cross the blood-brain barrier (BBB) and reach the central nervous system (CNS). S16-1029 can be used for Alzheimer's disease (AD) research <sup>[1]</sup> .	
IC <sub>50</sub> & Target	eqBChE 11.35 nM (IC <sub>50</sub> )	hBChE 48.1 nM (IC <sub>50</sub> )

### REFERENCES

[1]. Shuaishuai Xing, et al. Optimizing drug-like properties of selective butyrylcholinesterase inhibitors for cognitive improvement: Enhancing aqueous solubility by disrupting molecular plane. *Eur J Med Chem.* 2024 Mar 2;268:116289.

**Caution: Product has not been fully validated for medical applications. For research use only.**

Tel: 609-228-6898

Fax: 609-228-5909

E-mail: tech@MedChemExpress.com

Address: 1 Deer Park Dr, Suite Q, Monmouth Junction, NJ 08852, USA