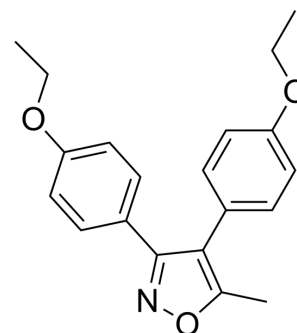


## COX-1-IN-1

Cat. No.:	HY-162167
CAS No.:	1369503-03-6
Molecular Formula:	C <sub>20</sub> H <sub>21</sub> NO <sub>3</sub>
Molecular Weight:	323.39
Target:	COX
Pathway:	Immunology/Inflammation
Storage:	Please store the product under the recommended conditions in the Certificate of Analysis.



### BIOLOGICAL ACTIVITY

<b>Description</b>	COX-1-IN-1 (compound 15a) is a selective inhibitor for cyclooxygenase (COX), with IC <sub>50</sub> s of 0.23 μM (COX-1) and >50 μM (COX-2), selective index (COX-2 IC <sub>50</sub> /COX-1 IC <sub>50</sub> ) is 217. COX-1-IN-1 inhibits platelet aggregation <sup>[1]</sup> .									
<b>IC<sub>50</sub> &amp; Target</b>	COX-1 0.23 μM (IC <sub>50</sub> )	COX-2 50 μM (IC <sub>50</sub> )								
<b>In Vitro</b>	<p>COX-1-IN-1 inhibits arachidonic acid (AA) induced platelet aggregation with IC<sub>50</sub> of 1 μM. COX-1-IN-1 (100 μM, 3 h) reveals low cytotoxicity for cells and platelets<sup>[1]</sup>.</p> <p>MCE has not independently confirmed the accuracy of these methods. They are for reference only.</p> <p>Cell Cytotoxicity Assay<sup>[1]</sup></p> <table border="1"> <tr> <td>Cell Line:</td> <td>Vero</td> </tr> <tr> <td>Concentration:</td> <td>100 μM</td> </tr> <tr> <td>Incubation Time:</td> <td>3 h</td> </tr> <tr> <td>Result:</td> <td>Revealed platelet and cell viabilities above 90%.</td> </tr> </table>		Cell Line:	Vero	Concentration:	100 μM	Incubation Time:	3 h	Result:	Revealed platelet and cell viabilities above 90%.
Cell Line:	Vero									
Concentration:	100 μM									
Incubation Time:	3 h									
Result:	Revealed platelet and cell viabilities above 90%.									

### REFERENCES

[1]. Solidoro R, et al., A further pocket or conformational plasticity by mapping COX-1 catalytic site through modified-mofezolac structure-inhibitory activity relationships and their antiplatelet behavior. *Eur J Med Chem.* 2024 Feb 15;266:116135.

**Caution: Product has not been fully validated for medical applications. For research use only.**

Tel: 609-228-6898

Fax: 609-228-5909

E-mail: tech@MedChemExpress.com

Address: 1 Deer Park Dr, Suite Q, Monmouth Junction, NJ 08852, USA