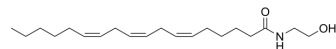


γ-Linolenoyl monoethanolamide

Cat. No.:	HY-162298
CAS No.:	150314-37-7
Molecular Formula:	C ₂₀ H ₃₅ NO ₂
Molecular Weight:	321.5
Target:	Cannabinoid Receptor
Pathway:	GPCR/G Protein; Neuronal Signaling
Storage:	Please store the product under the recommended conditions in the Certificate of Analysis.



BIOLOGICAL ACTIVITY

Description

γ-Linolenoyl monoethanolamide, a kind of fatty N-acyl ethanolamine, is an endocannabinoid^{[1][2]}.

REFERENCES

- [1]. M Van Der Stelt, et al. Formation of a new class of oxylipins from N-acyl(ethanol)amines by the lipoxygenase pathway. *Eur J Biochem.* 2000 Apr;267(7):2000-7.
- [2]. Matthew W Buczynski, et al. Inflammatory hyperalgesia induces essential bioactive lipid production in the spinal cord. *J Neurochem.* 2010 Aug;114(4):981-93.

Caution: Product has not been fully validated for medical applications. For research use only.

Tel: 609-228-6898

Fax: 609-228-5909

E-mail: tech@MedChemExpress.com

Address: 1 Deer Park Dr, Suite Q, Monmouth Junction, NJ 08852, USA