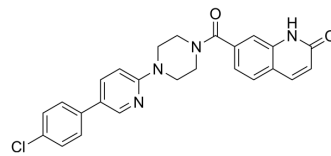


MAGL-IN-16

Cat. No.:	HY-162315
Molecular Formula:	C ₂₅ H ₂₁ ClN ₄ O ₂
Molecular Weight:	444.91
Target:	MAGL
Pathway:	Metabolic Enzyme/Protease
Storage:	Please store the product under the recommended conditions in the Certificate of Analysis.



BIOLOGICAL ACTIVITY

Description

MAGL-IN-16 (compound 27) is an oral active, selective and reversible MAGL inhibitor with the IC₅₀ value of 10.3 nM. MAGL-IN-16 can increase the level of 2-AG and shows antidepressant effect in mouse depressed model caused by chronic restraint stress^[1].

REFERENCES

[1]. Hao Q, et al. Discovery of a novel class of reversible monoacylglycerol lipase inhibitors for potential treatment of depression. *Eur J Med Chem.* 2024 Feb 26;268:116285.

Caution: Product has not been fully validated for medical applications. For research use only.

Tel: 609-228-6898

Fax: 609-228-5909

E-mail: tech@MedChemExpress.com

Address: 1 Deer Park Dr, Suite Q, Monmouth Junction, NJ 08852, USA