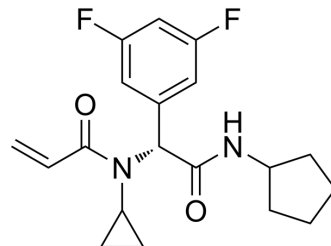


(R)-LW-Srci-8

Cat. No.:	HY-162413
Molecular Formula:	C ₁₉ H ₂₂ F ₂ N ₂ O ₂
Molecular Weight:	348.39
Target:	Src
Pathway:	Protein Tyrosine Kinase/RTK
Storage:	Please store the product under the recommended conditions in the Certificate of Analysis.



BIOLOGICAL ACTIVITY

Description	(R)-LW-Srci-8 is a selective covalent inhibitor of c?Src (IC ₅₀ = 35.83 nM) that disrupts the autophosphorylation of c?Src by targeting its autophosphorylation site (Y419) ^[1] .
IC ₅₀ & Target	IC ₅₀ : 35.83 (c?Src) ^[1] .
In Vitro	MDA-MB-468 (5-20 μM; 3 h) inhibits the phosphorylation of c-Src at Y419 and STAT3 at Y705 in a dose-dependent manner in MDA-MB-468 cells ^[1] . MCE has not independently confirmed the accuracy of these methods. They are for reference only.

REFERENCES

[1]. Zhang H, et al. Discovery of a Covalent Inhibitor Selectively Targeting the Autophosphorylation Site of c-Src Kinase. ACS Chem Biol. 2024;19(4):999-1010.

Caution: Product has not been fully validated for medical applications. For research use only.

Tel: 609-228-6898

Fax: 609-228-5909

E-mail: tech@MedChemExpress.com

Address: 1 Deer Park Dr, Suite Q, Monmouth Junction, NJ 08852, USA