

File ..CHEM32\1\DATA\20170316\HEC\ZHJ4103-018-1B.D Tgt Mass (EZX): 784.00

Injection Date : 16 Mar 17 12:15 pm +0800 Seq. Line : 0

Sample Name : ZHJ4103-018-1B Location : Pl-F-01

Acq. Operator : GZZ_718 Inj : 1

Spec. Reported : MS Integration Inj Volume : 1 ul

Acq. Method : D:\Chem32\1\METHODS\1-POS-3MIN.M

Analysis Method : D:\CHEM32\1\METHODS\1-POS-3MIN-PROSRSS.M

Catalog No : HY-16293 Batch#24000 Easy-Access Method: '1-POS-3MIN' 784.00

Method Info : Mobile Phase: A: water(0.01%TFA) B:ACN(0.01%TFA)

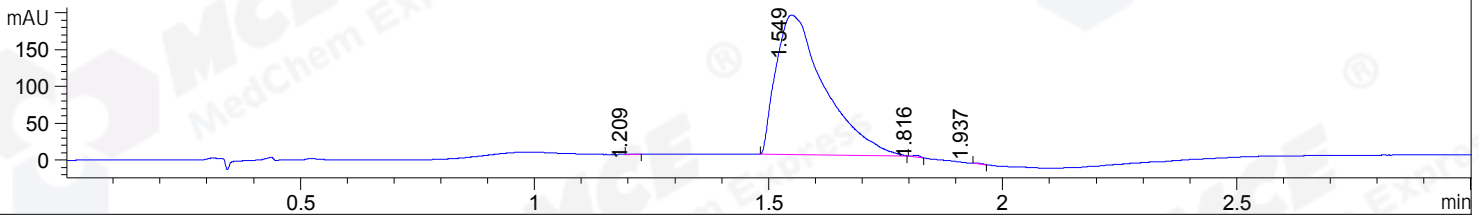
Gradient: 5% to 95%B within 1.3 min

Flow Rate :1.8ml/min

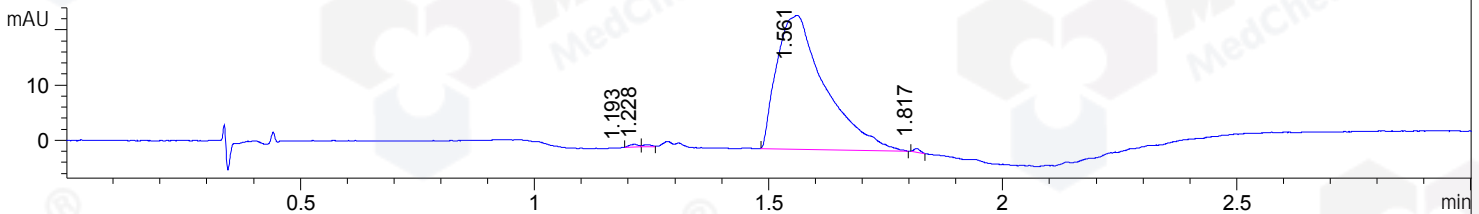
Column :SunFire C18, 4.6*50mm,3.5um A-RP-186

Oven Temperature : 45C

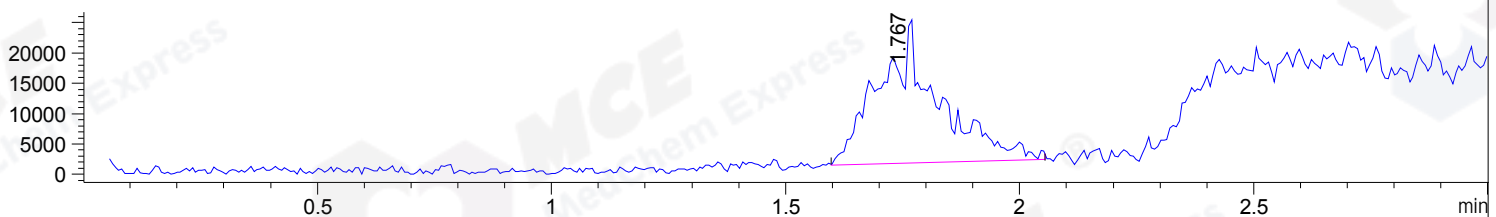
DAD1 B, Sig=214,4 Ref=off



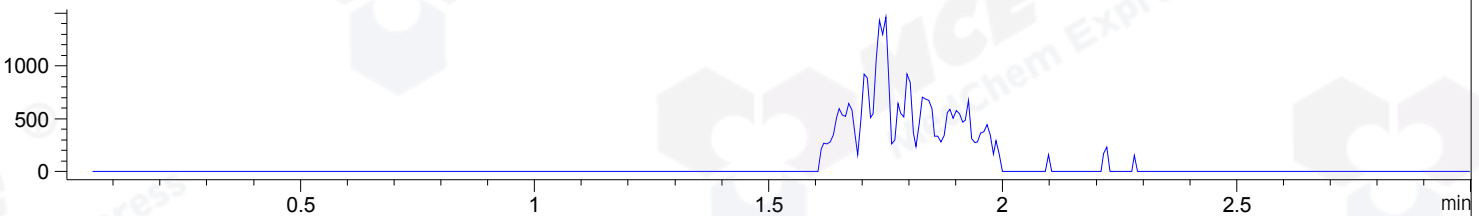
DAD1 C, Sig=254,4 Ref=off



MSD1 TIC, MS File ES-API, Pos, Scan, Frag: 70



Ion 785, MSD1 785, Target Mass 784 +H Positive, EIC=784.7:785.7



Integration Results for DAD1 B, Sig=214,4 Ref=off

RetTim	Width	Area	Height	Area%	MS (+)
1.21	0.02	1.12	0.79	0.08	ND
1.55	0.12	1376.33	189.68	99.64	384
1.82	0.02	2.83	2.81	0.20	384
1.94	0.02	1.04	0.24	0.07	384

Integration Results for DAD1 C, Sig=254,4 Ref=off

RetTim	Width	Area	Height	Area%	MS (+)
1.19	0.02	0.69	-0.00	0.39	ND
1.23	0.02	0.49	0.29	0.28	ND
1.56	0.12	174.34	24.30	98.94	384
1.82	0.02	0.68	0.71	0.39	384

Ret. Time: 1.77

<<<< POSITIVE SPECTRA >>>>

