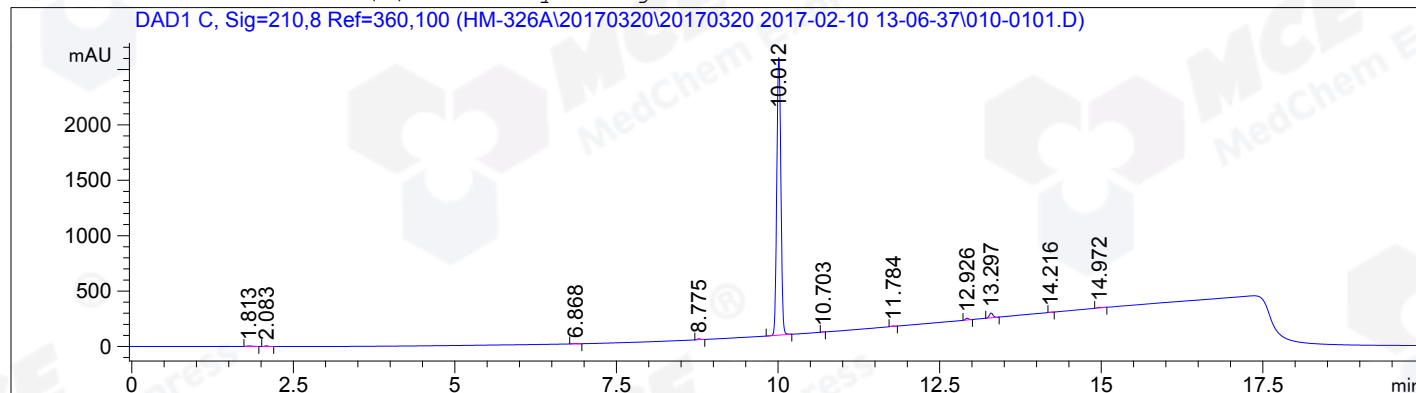


```

=====
Acq. Operator   : LJQ                               Seq. Line :    1
Acq. Instrument : HPLC-12                           Location  : Vial 10
Injection Date  : 2017-03-20 01:08:26              Inj       :    1
                                                    Inj Volume: 5.0 µl
Acq. Method     : C:\CHEM32\2\DATA\HM-326A\20170320\20170320 2017-02-10 13-06-37\HM-326C_3-
                  H01P03.M
Last changed    : 2017-03-20 01:06:31 by LJQ
Analysis Method : C:\CHEM32\2\METHODS\HM-326C_3-H01P03.M
Last changed    : 2017-03-20 03:15:13 by LJQ
                  (modified after loading)
Catalog No     : HY-16293 Batch#24000
                  A-RP-200
=====
  
```

Additional Info : Peak(s) manually integrated



Area Percent Report

```

=====
Sorted By      :      Signal
Multiplier:    :      1.0000
Dilution:      :      1.0000
Use Multiplier & Dilution Factor with ISTDs
=====
  
```

Signal 1: DAD1 C, Sig=210,8 Ref=360,100

Peak #	RetTime [min]	Type	Width [min]	Area [mAU*s]	Height [mAU]	Area %
1	1.813	MM	0.1116	33.60588	5.02005	0.2947
2	2.083	MM	0.0585	19.62764	5.59666	0.1721
3	6.868	MM	0.0785	10.04069	2.13074	0.0880
4	8.775	MM	0.0573	27.60808	8.02803	0.2421
5	10.012	BB	0.0712	1.10399e4	2514.50977	96.8052
6	10.703	MM	0.0596	3.34648	9.36566e-1	0.0293
7	11.784	MM	0.0627	13.43908	3.57202	0.1178
8	12.926	MM	0.0548	54.38938	16.54689	0.4769
9	13.297	MM	0.0653	168.36827	42.97414	1.4764
10	14.216	MM	0.0530	3.39030	1.06516	0.0297
11	14.972	MM	0.0813	30.52554	6.25571	0.2677

Totals : 1.14043e4 2606.63573

\*\*\* End of Report \*\*\*