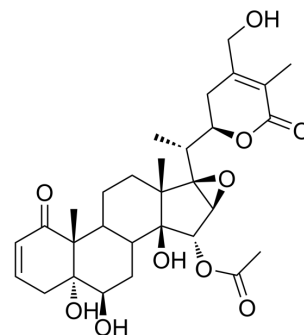


## Physagulide Y

Cat. No.:	HY-163139
Molecular Formula:	C <sub>30</sub> H <sub>40</sub> O <sub>10</sub>
Molecular Weight:	560.63
Target:	GLUT
Pathway:	Membrane Transporter/Ion Channel
Storage:	Please store the product under the recommended conditions in the Certificate of Analysis.



### BIOLOGICAL ACTIVITY

#### Description

Physagulide Y (2), a withanolide with anticancer activity, is a GLUT1 inhibitor<sup>[1]</sup>.

### REFERENCES

[1]. Jinghan Zhang, et al. Target Separation and Potential Anticancer Activity of Withanolide-Based Glucose Transporter Protein 1 Inhibitors from *Physalis angulata* var. *villosa* J Nat Prod. 2023 Dec 20.

**Caution: Product has not been fully validated for medical applications. For research use only.**

Tel: 609-228-6898

Fax: 609-228-5909

E-mail: tech@MedChemExpress.com

Address: 1 Deer Park Dr, Suite Q, Monmouth Junction, NJ 08852, USA