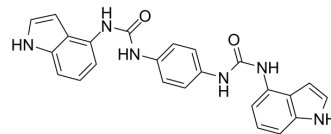


## $\alpha$ -Synuclein inhibitor 11

Cat. No.:	HY-163145
Molecular Formula:	C <sub>24</sub> H <sub>20</sub> N <sub>6</sub> O <sub>2</sub>
Molecular Weight:	424.45
Target:	$\alpha$ -synuclein
Pathway:	Neuronal Signaling
Storage:	Please store the product under the recommended conditions in the Certificate of Analysis.



### BIOLOGICAL ACTIVITY

#### Description

$\alpha$ -Synuclein inhibitor 11 (compound 1) is a selective  $\alpha$ -synuclein ( $\alpha$ -syn) oligomer formation inhibitor.  $\alpha$ -Synuclein inhibitor 11 does not inhibit tau 4R (isoforms 0N4R, 2N4R) or p-tau (isoform 1N4R).  $\alpha$ -Synuclein inhibitor 11 can be used for Parkinson's disease (PD) research<sup>[1]</sup>.

### REFERENCES

[1]. Susantha K Ganegamage, et al. 1,4-Diurea- and 1,4-Dithiurea-Substituted Aromatic Derivatives Selectively Inhibit  $\alpha$ -Synuclein Oligomer Formation In Vitro. ACS Omega. 2023 Dec 19;9(1):1216-1229.

**Caution: Product has not been fully validated for medical applications. For research use only.**

Tel: 609-228-6898

Fax: 609-228-5909

E-mail: tech@MedChemExpress.com

Address: 1 Deer Park Dr, Suite Q, Monmouth Junction, NJ 08852, USA