

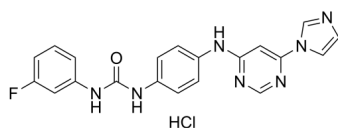
Miro1 Reducer

Cat. No.: HY-163172
Batch No.: 411068
CAS No.: 2624336-91-8
Molecular Formula: C₂₀H₁₇ClFN₇O

ANALYTICAL DATA

Theoretical: C(53.04%)、H(4.45%)、N(21.65%)
Result: C(52.84%)、H(4.06%)、N(21.62%)

Chemical Structure:



Caution: Product has not been fully validated for medical applications. For research use only.

Tel: 609-228-6898

Fax: 609-228-5909

E-mail: tech@MedChemExpress.com

Address: 1 Deer Park Dr, Suite Q, Monmouth Junction, NJ 08852, USA