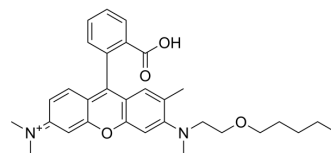


## 2-Me PeER

Cat. No.:	HY-163324A
Molecular Formula:	C <sub>31</sub> H <sub>37</sub> N <sub>2</sub> O <sub>4</sub> <sup>+</sup>
Molecular Weight:	502
Target:	Cytochrome P450
Pathway:	Metabolic Enzyme/Protease
Storage:	Please store the product under the recommended conditions in the Certificate of Analysis.



## BIOLOGICAL ACTIVITY

### Description

2-Me PeER is a rhodamine dye-based fluorescent probe that detects CYP3A4 activity. In fluorescence-activated cell sorting (FACS) based on CYP3A4 activity, homogeneous and functional human induced pluripotent stem cell (hiPSC)-derived hepatocytes and intestinal epithelial cells can be obtained with the aid of 2-Me PeER<sup>[1]</sup>.

**Caution: Product has not been fully validated for medical applications. For research use only.**

Tel: 609-228-6898

Fax: 609-228-5909

E-mail: tech@MedChemExpress.com

Address: 1 Deer Park Dr, Suite Q, Monmouth Junction, NJ 08852, USA