

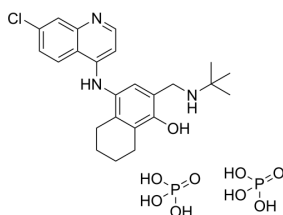
Naphthoquine (phosphate)

Cat. No.: HY-17036
 CAS No.: 173531-58-3
 Batch No.: 06390
 Chemical Name: 1-Naphthalenol, 4-[(7-chloro-4-quinolinyl)amino]-2-[[[(1,1-dimethylethyl)amino]methyl]-5,6,7,8-tetrahydro-, phosphate (1:2) (salt) (9Cl)

PHYSICAL AND CHEMICAL PROPERTIES

Molecular Formula: $C_{24}H_{34}ClN_3O_9P_2$
 Molecular Weight: 605.94
 Storage: 4°C, sealed storage, away from moisture
 * In solvent : -80°C, 6 months; -20°C, 1 month (sealed storage, away from moisture)

Chemical Structure:



ANALYTICAL DATA

Appearance: Light yellow to yellow (Solid)
 LCMS: Consistent with structure
 Purity (LCMS): 99.59%
 Conclusion: The product has been tested and complies with the given specifications.

Caution: Product has not been fully validated for medical applications. For research use only.

Tel: 609-228-6898

Fax: 609-228-5909

E-mail: tech@MedChemExpress.com

Address: 1 Deer Park Dr, Suite Q, Monmouth Junction, NJ 08852, USA