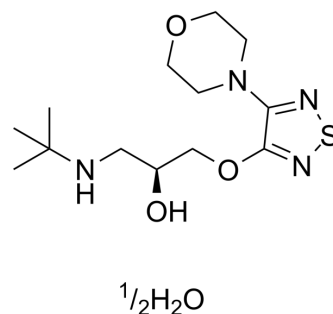


## Timolol hemihydrate

Cat. No.:	HY-17494A
CAS No.:	91524-16-2
Molecular Formula:	C <sub>13</sub> H <sub>24</sub> N <sub>4</sub> O <sub>3</sub> S <sub>1</sub> /2H <sub>2</sub> O
Molecular Weight:	325.43
Target:	Adrenergic Receptor
Pathway:	GPCR/G Protein; Neuronal Signaling
Storage:	Please store the product under the recommended conditions in the Certificate of Analysis.



### BIOLOGICAL ACTIVITY

<b>Description</b>	Timolol (hemihydrate) is a $\beta$ -blocker available for both topical and systemic administration. Timolol (hemihydrate) is primarily used to reduce intraocular pressure with open-angle glaucoma and ocular hypertension and Timolol (hemihydrate) also has cardioprotective effect <sup>[1][2]</sup> .								
<b>IC<sub>50</sub> &amp; Target</b>	$\beta$ adrenergic receptor								
<b>In Vitro</b>	Timolol (hemihydrate) can significantly prevent the increased lipid peroxidation level of the heart from diabetic rats. Timolol (hemihydrate) can induce a well-balanced ratio between oxidative stress and antioxidant defense system in the diabetic animals, can have an important cardioprotection against diabetes-induced ERS and associated apoptotic effects <sup>[3]</sup> . MCE has not independently confirmed the accuracy of these methods. They are for reference only.								
<b>In Vivo</b>	Timolol (hemihydrate) (5 mg/kg daily for 12-week) has a cardioprotective effect via inhibition of ERS response in diabetic rats <sup>[3]</sup> . MCE has not independently confirmed the accuracy of these methods. They are for reference only.								
	<table> <tr> <td>Animal Model:</td> <td>Male Wistar rats<sup>[3]</sup>.</td> </tr> <tr> <td>Dosage:</td> <td>5 mg/kg</td> </tr> <tr> <td>Administration:</td> <td>Timolol (5 mg/kg daily for 12-week)</td> </tr> <tr> <td>Result:</td> <td>Showed cardioprotective effect.</td> </tr> </table>	Animal Model:	Male Wistar rats <sup>[3]</sup> .	Dosage:	5 mg/kg	Administration:	Timolol (5 mg/kg daily for 12-week)	Result:	Showed cardioprotective effect.
Animal Model:	Male Wistar rats <sup>[3]</sup> .								
Dosage:	5 mg/kg								
Administration:	Timolol (5 mg/kg daily for 12-week)								
Result:	Showed cardioprotective effect.								

### CUSTOMER VALIDATION

- Patent. US20230090708A1.

See more customer validations on [www.MedChemExpress.com](http://www.MedChemExpress.com)

### REFERENCES

---

[1]. Figen Amber Cicek, et al. Beta-blocker timolol alleviates hyperglycemia-induced cardiac damage via inhibition of endoplasmic reticulum stress. J Bioenerg Biomembr

[2]. E. Ansari, et al. Treatment of open-angle glaucoma and ocular hypertension with preservative-free tafuprost/timolol fixed-dose combination therapy: 6 case reports and clinical outcomes. BMC Ophthalmol. 2022 Apr 2;22(1):152.

---

**Caution: Product has not been fully validated for medical applications. For research use only.**

Tel: 609-228-6898

Fax: 609-228-5909

E-mail: [tech@MedChemExpress.com](mailto:tech@MedChemExpress.com)

Address: 1 Deer Park Dr, Suite Q, Monmouth Junction, NJ 08852, USA