

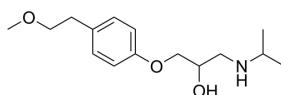
Metoprolol

Cat. No.: HY-17503
 CAS No.: 51384-51-1
 Batch No.: 122513
 Chemical Name: 2-Propanol, 1-[4-(2-methoxyethyl)phenoxy]-3-[(1-methylethyl)amino]-

PHYSICAL AND CHEMICAL PROPERTIES

Molecular Formula: $C_{15}H_{25}NO_3$
 Molecular Weight: 267.36
 Storage: 4°C, protect from light
 * In solvent : -80°C, 6 months; -20°C, 1 month (protect from light)

Chemical Structure:



ANALYTICAL DATA

Appearance: White to off-white (Solid)
 1H NMR Spectrum: Consistent with structure
 LCMS: Consistent with structure
 Purity (LCMS): 99.89%
 Conclusion: The product has been tested and complies with the given specifications.

Caution: Product has not been fully validated for medical applications. For research use only.

Tel: 609-228-6898

Fax: 609-228-5909

E-mail: tech@MedChemExpress.com

Address: 1 Deer Park Dr, Suite Q, Monmouth Junction, NJ 08852, USA