

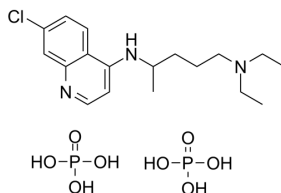
## Chloroquine (phosphate)

Cat. No.: HY-17589  
 CAS No.: 50-63-5  
 Batch No.: 15006  
 Chemical Name: 1,4-Pentanediamine, N4-(7-chloro-4-quinolinyl)-N1,N1-diethyl-, phosphate (1:2)

### PHYSICAL AND CHEMICAL PROPERTIES

Molecular Formula:  $C_{18}H_{32}ClN_3O_8P_2$   
 Molecular Weight: 515.86  
 Storage: 4°C, sealed storage, away from moisture and light  
 \* In solvent : -80°C, 6 months; -20°C, 1 month (sealed storage, away from moisture and light)

### Chemical Structure:



### ANALYTICAL DATA

Appearance: White to off-white (Solid)  
 $^1H$  NMR Spectrum: Consistent with structure  
 LCMS: Consistent with structure  
 Purity (LCMS): 99.89%  
 Conclusion: The product has been tested and complies with the given specifications.

**Caution: Product has not been fully validated for medical applications. For research use only.**

Tel: 609-228-6898

Fax: 609-228-5909

E-mail: tech@MedChemExpress.com

Address: 1 Deer Park Dr, Suite Q, Monmouth Junction, NJ 08852, USA