

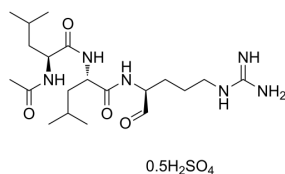
Leupeptin (hemisulfate)

Cat. No.: HY-18234A
 CAS No.: 103476-89-7
 Batch No.: 308607
 Chemical Name: L-Leucinamide, N-acetyl-L-leucyl-N-[(1S)-4-[(aminoiminomethyl)amino]-1-formylbutyl]-, sulfate (2:1)

PHYSICAL AND CHEMICAL PROPERTIES

Molecular Formula: $C_{20}H_{38}N_6O_4 \cdot 1/2H_2SO_4$
 Molecular Weight: 475.59
 Storage: -20°C, sealed storage, away from moisture
 * In solvent : -80°C, 6 months; -20°C, 1 month (sealed storage, away from moisture)

Chemical Structure:



ANALYTICAL DATA

Appearance: White to off-white (Solid)
 1H NMR Spectrum: Consistent with structure
 MS: Consistent with structure
 Purity (NMR): $\geq 98.0\%$
 Conclusion: The product has been tested and complies with the given specifications.

Caution: Product has not been fully validated for medical applications. For research use only.

Tel: 609-228-6898

Fax: 609-228-5909

E-mail: tech@MedChemExpress.com

Address: 1 Deer Park Dr, Suite Q, Monmouth Junction, NJ 08852, USA