

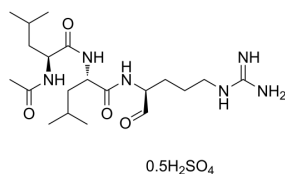
Leupeptin (hemisulfate)

Cat. No.:	HY-18234A
CAS No.:	103476-89-7
Batch No.:	416482
Chemical Name:	L-Leucinamide, N-acetyl-L-leucyl-N-[(1S)-4-[(aminoiminomethyl)amino]-1-formylbutyl]-, sulfate (2:1)

PHYSICAL AND CHEMICAL PROPERTIES

Molecular Formula:	$C_{20}H_{38}N_6O_4 \cdot 1/2H_2SO_4$
Molecular Weight:	475.59
Storage:	-20°C, sealed storage, away from moisture * In solvent : -80°C, 6 months; -20°C, 1 month (sealed storage, away from moisture)

Chemical Structure:



ANALYTICAL DATA

Appearance:	White to off-white (Solid)
1H NMR Spectrum:	Consistent with structure
MS:	Consistent with structure
Purity (NMR):	$\geq 98.0\%$
Conclusion:	The product has been tested and complies with the given specifications.

Caution: Product has not been fully validated for medical applications. For research use only.

Tel: 609-228-6898

Fax: 609-228-5909

E-mail: tech@MedChemExpress.com

Address: 1 Deer Park Dr, Suite Q, Monmouth Junction, NJ 08852, USA