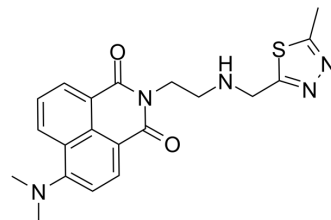


## Chitinase-IN-2

|                    |   |
|--------------------|---|
| Cat. No.:          | HY-18599  |
| CAS No.:           | 1579991-63-1  |
| Molecular Formula: | C <sub>20</sub> H <sub>21</sub> N <sub>5</sub> O <sub>2</sub> S   |
| Molecular Weight:  | 395.48  |
| Target:            | Others  |
| Pathway:           | Others  |
| Storage:           | <div>Pure form</div> <div>-20°C 3 years</div> <div>4°C 2 years</div> <div>In solvent</div> <div>-80°C 6 months</div> <div>-20°C 1 month</div> |



### SOLVENT & SOLUBILITY

#### In Vitro

DMSO : ≥ 53 mg/mL (134.01 mM)  
H<sub>2</sub>O : ≥ 50 mg/mL (126.43 mM)  
\* "≥" means soluble, but saturation unknown.

|                              | Solvent<br>Concentration | Mass | 1 mg      | 5 mg       | 10 mg      |
|------------------------------|--------------------------|------|-----------|------------|------------|
|                              |                          |      |           |            |            |
| Preparing<br>Stock Solutions | 1 mM                     |      | 2.5286 mL | 12.6429 mL | 25.2857 mL |
|                              | 5 mM                     |      | 0.5057 mL | 2.5286 mL  | 5.0571 mL  |
|                              | 10 mM                    |      | 0.2529 mL | 1.2643 mL  | 2.5286 mL  |

Please refer to the solubility information to select the appropriate solvent.

### BIOLOGICAL ACTIVITY

#### Description

Chitinase-IN-2 is a insect chitinase and N- acetyl hexosaminidase inhibitor and pesticide; 50 μM/20 μM compound concentration's inhibitory percentage are 98%/92% for chitinase/N- acetyl-hexosaminidase respectively.

### CUSTOMER VALIDATION

- Neuroscience. 2017 May 10;355:61-70.

See more customer validations on [www.MedChemExpress.com](http://www.MedChemExpress.com)

### REFERENCES

**Caution: Product has not been fully validated for medical applications. For research use only.**

Tel: 609-228-6898

Fax: 609-228-5909

E-mail: [tech@MedChemExpress.com](mailto:tech@MedChemExpress.com)

Address: 1 Deer Park Dr, Suite Q, Monmouth Junction, NJ 08852, USA