

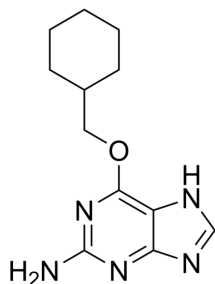
NU2058

Cat. No.: HY-19316
 CAS No.: 161058-83-9
 Batch No.: 18508
 Chemical Name: 9H-Purin-2-amine, 6-(cyclohexylmethoxy)-

PHYSICAL AND CHEMICAL PROPERTIES

Molecular Formula: $C_{12}H_{17}N_5O$
 Molecular Weight: 247.30
 Storage: Powder -20°C 3 years
 4°C 2 years
 In solvent -80°C 2 years
 -20°C 1 year

Chemical Structure:



ANALYTICAL DATA

Appearance: White to off-white (Solid)
 LCMS: Consistent with structure
 Purity (LCMS): 98.78%
 Conclusion: The product has been tested and complies with the given specifications.

Caution: Product has not been fully validated for medical applications. For research use only.

Tel: 609-228-6898

Fax: 609-228-5909

E-mail: tech@MedChemExpress.com

Address: 1 Deer Park Dr, Suite Q, Monmouth Junction, NJ 08852, USA