

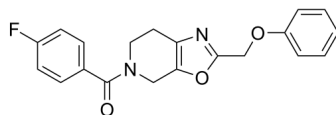
JNJ-46778212

Cat. No.: HY-19559
Batch No.: 33265
CAS No.: 1363281-27-9
Molecular Formula: C₂₀H₁₇N₂O₃

ANALYTICAL DATA

Theoretical: C(68.17%), H(4.86%), N(7.95%)
Result: C(67.92%), H(5.04%), N(7.84%)

Chemical Structure:



Caution: Product has not been fully validated for medical applications. For research use only.

Tel: 609-228-6898

Fax: 609-228-5909

E-mail: tech@MedChemExpress.com

Address: 1 Deer Park Dr, Suite Q, Monmouth Junction, NJ 08852, USA