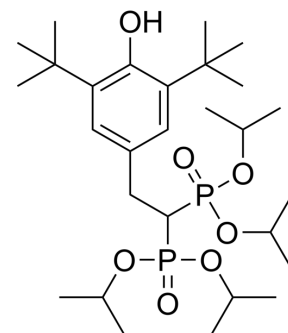


## Apomine

Cat. No.:	HY-19671
CAS No.:	126411-13-0
Molecular Formula:	C <sub>28</sub> H <sub>52</sub> O <sub>7</sub> P <sub>2</sub>
Molecular Weight:	562.66
Target:	Apoptosis
Pathway:	Apoptosis
Storage:	Please store the product under the recommended conditions in the Certificate of Analysis.



### BIOLOGICAL ACTIVITY

#### Description

Apomine (SR-45023A) is an antineoplastic agent that inhibits the mevalonate/isoprenoid pathway in cholesterol synthesis. It can accelerate the degradation of 3-hydroxy-3-methylglutaryl-CoA reductase (HMGR). Apomine can also inhibit the growth of various types of cancer cells, including lung cancer, colon cancer, breast cancer, and skin cancer. In addition, Apomine is able to induce apoptosis in tumor cell lines derived from leukemia, colon cancer, liver cancer, ovarian cancer, and breast cancer<sup>[1]</sup>.

### REFERENCES

[1]. Kuehl PJ, et al. Preformulation, formulation, and in vivo efficacy of topically applied apomine. Int J Pharm. 2009;382(1-2):104-110.

**Caution: Product has not been fully validated for medical applications. For research use only.**

Tel: 609-228-6898

Fax: 609-228-5909

E-mail: tech@MedChemExpress.com

Address: 1 Deer Park Dr, Suite Q, Monmouth Junction, NJ 08852, USA