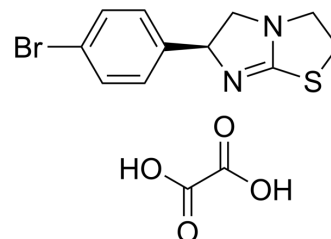


## (-)-p-Bromotetramisole oxalate

Cat. No.:	HY-19695
CAS No.:	62284-79-1
Molecular Formula:	C <sub>13</sub> H <sub>13</sub> BrN <sub>2</sub> O <sub>4</sub> S
Molecular Weight:	373.22
Target:	Phosphatase
Pathway:	Metabolic Enzyme/Protease
Storage:	4°C, sealed storage, away from moisture * In solvent : -80°C, 6 months; -20°C, 1 month (sealed storage, away from moisture)



### SOLVENT & SOLUBILITY

#### In Vitro

DMSO : ≥ 29 mg/mL (77.70 mM)  
H<sub>2</sub>O : ≥ 25 mg/mL (66.98 mM)  
\* "≥" means soluble, but saturation unknown.

	Solvent Concentration	Mass	1 mg	5 mg	10 mg
Preparing Stock Solutions	1 mM		2.6794 mL	13.3969 mL	26.7938 mL
	5 mM		0.5359 mL	2.6794 mL	5.3588 mL
	10 mM		0.2679 mL	1.3397 mL	2.6794 mL

Please refer to the solubility information to select the appropriate solvent.

#### In Vivo

1. Add each solvent one by one: 10% DMSO >> 90% (20% SBE-β-CD in saline)  
Solubility: ≥ 2.5 mg/mL (6.70 mM); Clear solution
2. Add each solvent one by one: 10% DMSO >> 40% PEG300 >> 5% Tween-80 >> 45% saline  
Solubility: ≥ 2.08 mg/mL (5.57 mM); Clear solution
3. Add each solvent one by one: 10% DMSO >> 90% corn oil  
Solubility: ≥ 2.08 mg/mL (5.57 mM); Clear solution

### BIOLOGICAL ACTIVITY

#### Description

(-)-p-Bromotetramisole Oxalate is a potent and non-specific alkaline phosphatase inhibitor.

### CUSTOMER VALIDATION

- Metabolites. 2023, 13(1), 30.

---

See more customer validations on [www.MedChemExpress.com](http://www.MedChemExpress.com)

**Caution: Product has not been fully validated for medical applications. For research use only.**

Tel: 609-228-6898

Fax: 609-228-5909

E-mail: [tech@MedChemExpress.com](mailto:tech@MedChemExpress.com)

Address: 1 Deer Park Dr, Suite F, Monmouth Junction, NJ 08852, USA