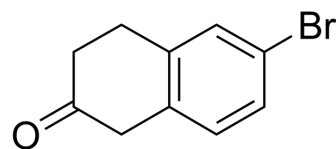


## 6-Bromo-2-tetralone

Cat. No.:	HY-30059		
CAS No.:	4133-35-1		
Molecular Formula:	C <sub>10</sub> H <sub>9</sub> BrO		
Molecular Weight:	225.08		
Target:	Biochemical Assay Reagents		
Pathway:	Others		
Storage:	Powder	-20°C	3 years
	In solvent	-80°C	6 months
		-20°C	1 month



### SOLVENT & SOLUBILITY

#### In Vitro

DMSO : 66.67 mg/mL (296.21 mM; Need ultrasonic)

Concentration	Solvent	Mass		
		1 mg	5 mg	10 mg
Preparing Stock Solutions	1 mM	4.4429 mL	22.2143 mL	44.4286 mL
	5 mM	0.8886 mL	4.4429 mL	8.8857 mL
	10 mM	0.4443 mL	2.2214 mL	4.4429 mL

Please refer to the solubility information to select the appropriate solvent.

### BIOLOGICAL ACTIVITY

#### Description

6-Bromo-2-tetralone is a biochemical reagent that can be used as a biological material or organic compound for life science related research.

#### In Vitro

6-Bromo-3,4-dihydro-2(1H)-naphthalenone (CAS# 4133-35-1) is a useful research chemical. MCE has not independently confirmed the accuracy of these methods. They are for reference only.

**Caution: Product has not been fully validated for medical applications. For research use only.**

Tel: 609-228-6898

Fax: 609-228-5909

E-mail: tech@MedChemExpress.com

Address: 1 Deer Park Dr, Suite Q, Monmouth Junction, NJ 08852, USA