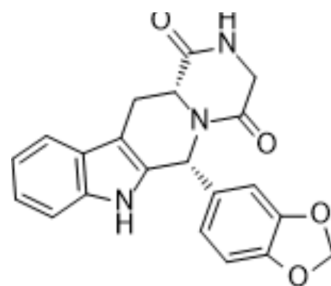


## Nortadalafil

<b>Cat. No.:</b>	HY-90009		
<b>CAS No.:</b>	171596-36-4		
<b>Molecular Formula:</b>	C <sub>21</sub> H <sub>17</sub> N <sub>3</sub> O <sub>4</sub>		
<b>Molecular Weight:</b>	375.38		
<b>Target:</b>	Phosphodiesterase (PDE)		
<b>Pathway:</b>	Metabolic Enzyme/Protease		
<b>Storage:</b>	Powder	-20°C	3 years
		4°C	2 years
	In solvent	-80°C	2 years
		-20°C	1 year



### SOLVENT & SOLUBILITY

<b>In Vitro</b>	DMSO : 50 mg/mL (133.20 mM; Need ultrasonic)			
		Solvent Concentration	Mass	
			1 mg	5 mg
			10 mg	
	<b>Preparing Stock Solutions</b>	1 mM	2.6640 mL	13.3198 mL
	5 mM	0.5328 mL	2.6640 mL	5.3279 mL
	10 mM	0.2664 mL	1.3320 mL	2.6640 mL
Please refer to the solubility information to select the appropriate solvent.				
<b>In Vivo</b>	1. Add each solvent one by one: 10% DMSO >> 40% PEG300 >> 5% Tween-80 >> 45% saline Solubility: ≥ 2.5 mg/mL (6.66 mM); Clear solution  2. Add each solvent one by one: 10% DMSO >> 90% corn oil Solubility: ≥ 2.5 mg/mL (6.66 mM); Clear solution			

### BIOLOGICAL ACTIVITY

<b>Description</b>	Nortadalafil is demethyl Tadalafil, a PDE5 inhibitor.
<b>IC<sub>50</sub> &amp; Target</b>	PDE5

### REFERENCES

[1]. Daugan, et al. The discovery of tadalafil: a novel and highly selective PDE5 inhibitor. 2: 2,3,6,7,12,12a-hexahydropyrazino[1',2':1,6]pyrido[3,4-b]indole-1,4-dione analogue. *Journal of Medicinal Chemistry* (2003), 46(21), 4533-4542.

---

[2]. Porst H, et al. Chronic PDE-5 inhibition in patients with erectile dysfunction - a treatment approach using tadalafil once-daily. Expert Opin Pharmacother. 2012 Jul;13(10):1481-94.

[3]. Frey MK, Lang I. Tadalafil for the treatment of pulmonary arterial hypertension. Expert Opin Pharmacother. 2012 Apr;13(5):747-55.

---

**Caution: Product has not been fully validated for medical applications. For research use only.**

Tel: 609-228-6898

Fax: 609-228-5909

E-mail: [tech@MedChemExpress.com](mailto:tech@MedChemExpress.com)

Address: 1 Deer Park Dr, Suite Q, Monmouth Junction, NJ 08852, USA