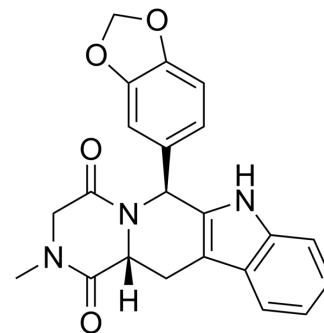


## cis-ent-Tadalafil

Cat. No.:	HY-90009D
CAS No.:	171596-28-4
Molecular Formula:	C <sub>22</sub> H <sub>19</sub> N <sub>3</sub> O <sub>4</sub>
Molecular Weight:	389.4
Target:	Phosphodiesterase (PDE)
Pathway:	Metabolic Enzyme/Protease
Storage:	Please store the product under the recommended conditions in the Certificate of Analysis.



### BIOLOGICAL ACTIVITY

#### Description

cis-ent-Tadalafil (Tadalafil EP Impurity C) is a highly potent PDE5 inhibitor with an IC<sub>50</sub> value of 5 nM and has blood pressure lowering activity<sup>[1]</sup>.

### REFERENCES

[1]. Daugan A, et al. The discovery of tadalafil: a novel and highly selective PDE5 inhibitor. 2: 2,3,6,7,12,12a-hexahydropyrazino[1',2':1,6]pyrido[3,4-b]indole-1,4-dione analogues. J Med Chem. 2003 Oct 9;46(21):4533-42.

**Caution: Product has not been fully validated for medical applications. For research use only.**

Tel: 609-228-6898

Fax: 609-228-5909

E-mail: tech@MedChemExpress.com

Address: 1 Deer Park Dr, Suite Q, Monmouth Junction, NJ 08852, USA