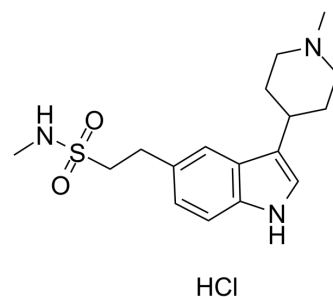


Naratriptan hydrochloride

| | |
|--------------------|---|
| Cat. No.: | HY-B0197A |
| CAS No.: | 143388-64-1 |
| Molecular Formula: | C ₁₇ H ₂₆ ClN ₃ O ₂ S |
| Molecular Weight: | 371.93 |
| Target: | 5-HT Receptor |
| Pathway: | GPCR/G Protein; Neuronal Signaling |
| Storage: | -20°C, sealed storage, away from moisture |
| | * In solvent : -80°C, 6 months; -20°C, 1 month (sealed storage, away from moisture) |



SOLVENT & SOLUBILITY

In Vitro

DMSO : ≥ 35 mg/mL (94.10 mM)
H₂O : 6.67 mg/mL (17.93 mM; Need ultrasonic)
* "≥" means soluble, but saturation unknown.

| | Solvent Concentration | Mass | 1 mg | 5 mg | 10 mg |
|------------------------------|--------------------------|------|-----------|------------|------------|
| | | | | | |
| Preparing Stock Solutions | 1 mM | | 2.6887 mL | 13.4434 mL | 26.8868 mL |
| | 5 mM | | 0.5377 mL | 2.6887 mL | 5.3774 mL |
| | 10 mM | | 0.2689 mL | 1.3443 mL | 2.6887 mL |

Please refer to the solubility information to select the appropriate solvent.

In Vivo

1. Add each solvent one by one: PBS
Solubility: 6.67 mg/mL (17.93 mM); Clear solution; Need ultrasonic and warming and heat to 60°C

BIOLOGICAL ACTIVITY

Description

Naratriptan hydrochloride is a selective 5-HT₁ receptor subtype agonist and is a triptan drug that is used for the treatment of migraine headaches. Target: 5-HT₁ Receptor. Naratriptan is a triptan drug marketed by GlaxoSmithKline and is used for the treatment of migraine headaches. Naratriptan is available in 2.5 mg tablets. It is a selective 5-HT₁ receptor subtype agonist. Naratriptan is used for the treatment of the acute migraine attacks and the symptoms of migraine, including severe, throbbing headaches that sometimes are accompanied by nausea and sensitivity to sound or light. The causes of migraine are not clearly understood; however, the efficacy of naratriptans and other triptans is believed to be due to their activity as 5HT (serotonin) agonists. A meta-analysis of 53 clinical trials has shown that all triptans are effective for treating migraine at marketed doses and that naratriptan, although less effective than sumatriptan and rizatriptan was more effective than placebo in reducing migraine symptoms at two hours and efficacy was demonstrated in almost two thirds of subjects after four hours of treatment.

CUSTOMER VALIDATION

- J Exp Med. 2022 Aug 1;219(8):e20212307.

See more customer validations on www.MedChemExpress.com

REFERENCES

[1]. Connor HE, et al. Naratriptan: biological profile in animal models relevant to migraine. Cephalalgia. 1997 May;17(3):145-52.

Caution: Product has not been fully validated for medical applications. For research use only.

Tel: 609-228-6898

Fax: 609-228-5909

E-mail: tech@MedChemExpress.com

Address: 1 Deer Park Dr, Suite Q, Monmouth Junction, NJ 08852, USA