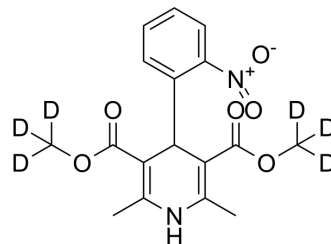


Nifedipine-d₆

Cat. No.:	HY-B0284S		
CAS No.:	1188266-14-9		
Molecular Formula:	C ₁₇ H ₁₂ D ₆ N ₂ O ₆		
Molecular Weight:	352.37		
Target:	Calcium Channel		
Pathway:	Membrane Transporter/Ion Channel; Neuronal Signaling		
Storage:	Powder	-20°C	3 years
		4°C	2 years
	In solvent	-80°C	6 months
		-20°C	1 month



SOLVENT & SOLUBILITY

In Vitro	DMSO : 50 mg/mL (141.90 mM; Need ultrasonic)			
		Solvent Concentration	Mass	
			1 mg	5 mg
			10 mg	
Preparing Stock Solutions	1 mM	2.8379 mL	14.1896 mL	28.3793 mL
	5 mM	0.5676 mL	2.8379 mL	5.6759 mL
	10 mM	0.2838 mL	1.4190 mL	2.8379 mL
Please refer to the solubility information to select the appropriate solvent.				
In Vivo	1. Add each solvent one by one: 10% DMSO >> 40% PEG300 >> 5% Tween-80 >> 45% saline Solubility: ≥ 1.25 mg/mL (3.55 mM); Clear solution			

BIOLOGICAL ACTIVITY

Description	Nifedipine-d ₆ is deuterium labeled nifedipine, and nifedipine is a potent calcium channel blocker.
--------------------	--

CUSTOMER VALIDATION

- Cell Death Discov. 2021 Feb 10;7(1):31.

See more customer validations on www.MedChemExpress.com

REFERENCES

[1]. Patel DP, et al. Highly sensitive and rapid ultra-performance liquid chromatography-tandem mass spectrometry method for the determination of nifedipine in human plasma and its application to a bioequivalence study. Biomed Chromatogr. 2012 Dec;26(12):1509-

Caution: Product has not been fully validated for medical applications. For research use only.

Tel: 609-228-6898

Fax: 609-228-5909

E-mail: tech@MedChemExpress.com

Address: 1 Deer Park Dr, Suite Q, Monmouth Junction, NJ 08852, USA