

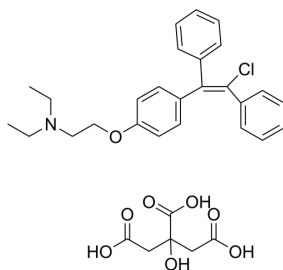
Clomiphene (citrate)

Cat. No.: HY-B0463
 CAS No.: 50-41-9
 Batch No.: 12851
 Chemical Name: Ethanamine, 2-[4-(2-chloro-1,2-diphenylethenyl)phenoxy]-N,N-diethyl-, 2-hydroxy-1,2,3-propanetricarboxylate (1:1)

PHYSICAL AND CHEMICAL PROPERTIES

Molecular Formula: $C_{32}H_{36}ClNO_8$
 Molecular Weight: 598.08
 Storage: 4°C, sealed storage, away from moisture
 * In solvent : -80°C, 6 months; -20°C, 1 month (sealed storage, away from moisture)

Chemical Structure:



ANALYTICAL DATA

Appearance: White to off-white (Solid)
 1H NMR Spectrum: Consistent with structure
 LCMS: Consistent with structure
 Purity (LCMS): 99.69%
 Conclusion: The product has been tested and complies with the given specifications.

Caution: Product has not been fully validated for medical applications. For research use only.

Tel: 609-228-6898

Fax: 609-228-5909

E-mail: tech@MedChemExpress.com

Address: 1 Deer Park Dr, Suite Q, Monmouth Junction, NJ 08852, USA