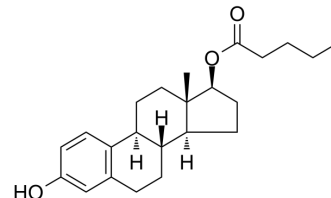


Estradiol valerate

Cat. No.:	HY-B0672
CAS No.:	979-32-8
Molecular Formula:	C ₂₃ H ₃₂ O ₃
Molecular Weight:	356.5
Target:	Estrogen Receptor/ERR
Pathway:	Vitamin D Related/Nuclear Receptor
Storage:	Powder -20°C 3 years 4°C 2 years In solvent -80°C 2 years -20°C 1 year



SOLVENT & SOLUBILITY

In Vitro

DMSO : ≥ 50 mg/mL (140.25 mM)
 H₂O : < 0.1 mg/mL (insoluble)
 * "≥" means soluble, but saturation unknown.

	Solvent Concentration	Mass	1 mg	5 mg	10 mg
Preparing Stock Solutions	1 mM		2.8050 mL	14.0252 mL	28.0505 mL
	5 mM		0.5610 mL	2.8050 mL	5.6101 mL
	10 mM		0.2805 mL	1.4025 mL	2.8050 mL

Please refer to the solubility information to select the appropriate solvent.

In Vivo

- Add each solvent one by one: 10% DMSO >> 40% PEG300 >> 5% Tween-80 >> 45% saline
Solubility: ≥ 2.67 mg/mL (7.49 mM); Clear solution
- Add each solvent one by one: 10% DMSO >> 90% (20% SBE-β-CD in saline)
Solubility: ≥ 2.67 mg/mL (7.49 mM); Clear solution
- Add each solvent one by one: 10% DMSO >> 90% corn oil
Solubility: ≥ 2.67 mg/mL (7.49 mM); Clear solution

BIOLOGICAL ACTIVITY

Description

Estradiol valerate (β-Estradiol 17-valerate) is a synthetic estrogen widely used in combination with other steroid hormones in hormone replacement therapy agents.

IC₅₀ & Target

Estrogen Receptor/ERR

In Vitro

Estradiol valerate (EV) is a synthetic estrogen widely used in combination with other steroid hormones in hormone replacement therapy drugs and is detected in natural waters. Estradiol valerate is a reproductive toxicant and estrogenic chemical in both male and female fish^[1].

MCE has not independently confirmed the accuracy of these methods. They are for reference only.

REFERENCES

[1]. Lei, B., et al., beta-estradiol 17-valerate affects embryonic development and sexual differentiation in Japanese medaka (*Oryzias latipes*). *Aquat Toxicol*, 2013. 134-135: p. 128-34.

Caution: Product has not been fully validated for medical applications. For research use only.

Tel: 609-228-6898

Fax: 609-228-5909

E-mail: tech@MedChemExpress.com

Address: 1 Deer Park Dr, Suite Q, Monmouth Junction, NJ 08852, USA