

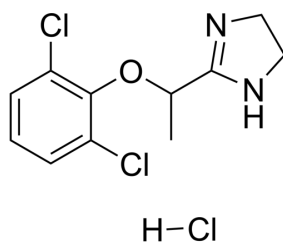
## Lofexidine (hydrochloride)

Cat. No.: HY-B1052  
 CAS No.: 21498-08-8  
 Batch No.: 86145  
 Chemical Name: 1H-Imidazole, 2-[1-(2,6-dichlorophenoxy)ethyl]-4,5-dihydro-, hydrochloride (1:1)

### PHYSICAL AND CHEMICAL PROPERTIES

Molecular Formula:  $C_{11}H_{13}Cl_3N_2O$   
 Molecular Weight: 295.59  
 Storage: 4°C, sealed storage, away from moisture  
 \* In solvent : -80°C, 6 months; -20°C, 1 month (sealed storage, away from moisture)

#### Chemical Structure:



### ANALYTICAL DATA

Appearance: White to off-white (Solid)  
 $^1H$  NMR Spectrum: Consistent with structure  
 LCMS: Consistent with structure  
 Purity (LCMS): 99.94%  
 Conclusion: The product has been tested and complies with the given specifications.

**Caution: Product has not been fully validated for medical applications. For research use only.**

Tel: 609-228-6898

Fax: 609-228-5909

E-mail: tech@MedChemExpress.com

Address: 1 Deer Park Dr, Suite Q, Monmouth Junction, NJ 08852, USA