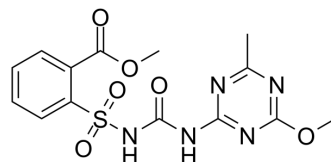


Metsulfuron-methyl

Cat. No.:	HY-B1869
CAS No.:	74223-64-6
Molecular Formula:	C ₁₄ H ₁₅ N ₅ O ₆ S
Molecular Weight:	381.36
Target:	Others
Pathway:	Others
Storage:	4°C, protect from light * In solvent : -80°C, 6 months; -20°C, 1 month (protect from light)



SOLVENT & SOLUBILITY

In Vitro	DMSO : 100 mg/mL (262.22 mM; Need ultrasonic)				
		Solvent Concentration	Mass		
	Preparing Stock Solutions		1 mg	5 mg	10 mg
		1 mM	2.6222 mL	13.1110 mL	26.2219 mL
		5 mM	0.5244 mL	2.6222 mL	5.2444 mL
	10 mM	0.2622 mL	1.3111 mL	2.6222 mL	
Please refer to the solubility information to select the appropriate solvent.					
In Vivo	1. Add each solvent one by one: 10% DMSO >> 40% PEG300 >> 5% Tween-80 >> 45% saline Solubility: ≥ 2.5 mg/mL (6.56 mM); Clear solution				
	2. Add each solvent one by one: 10% DMSO >> 90% corn oil Solubility: ≥ 2.5 mg/mL (6.56 mM); Clear solution				

BIOLOGICAL ACTIVITY

Description	Metsulfuron-methyl is a systemic sulfonylurea herbicide and has been widely used to control broad-leaved weeds and annual grasses in rice, maize, wheat, and barley. Metsulfuron-methyl has highly efficient herbicidal activity and low mammalian toxicity ^[1] .
-------------	--

REFERENCES

[1]. Guangyang Liu, et al. Visual and Colorimetric Sensing of Metsulfuron-Methyl by Exploiting Hydrogen Bond-Induced Anti-Aggregation of Gold Nanoparticles in the Presence of Melamine. *Sensors (Basel)*. 2018 May 17;18(5):1595.

Caution: Product has not been fully validated for medical applications. For research use only.

Tel: 609-228-6898

Fax: 609-228-5909

E-mail: tech@MedChemExpress.com

Address: 1 Deer Park Dr, Suite Q, Monmouth Junction, NJ 08852, USA