

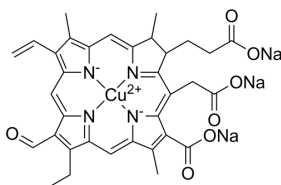
Sodium copper chlorophyllin B

Cat. No.:	HY-B2226
CAS No.:	28302-36-5
Batch No.:	26653
Chemical Name:	Cuprate(3-), [(7S,8S)-3-carboxy-5-(carboxymethyl)-13-ethenyl-18-ethyl-17-formyl-7,8-dihydro-2,8,12-trimethyl-21H,23H-porphine-7-propanoato(5-)-κN21,κN22,κN23,κN24]-, sodium (1:3), (SP-4-2)-

PHYSICAL AND CHEMICAL PROPERTIES

Molecular Formula:	C ₃₄ H ₂₉ CuN ₄ Na ₃ O ₇
Molecular Weight:	738.13
Storage:	4°C, sealed storage, away from moisture * In solvent : -80°C, 6 months; -20°C, 1 month (sealed storage, away from moisture)

Chemical Structure:



ANALYTICAL DATA

Appearance:	Black green to black (Solid)
Lambda max:	406.0 nm
Absorbance(E1% 1cm):	537(406.0 nm)
Abs-ratio(a/b):	3.60
Drying Loss:	1.5 %
Copper:	4.3 %
Conclusion:	The product has been tested and complies with the given specifications.

Caution: Product has not been fully validated for medical applications. For research use only.

Tel: 609-228-6898

Fax: 609-228-5909

E-mail: tech@MedChemExpress.com

Address: 1 Deer Park Dr, Suite Q, Monmouth Junction, NJ 08852, USA