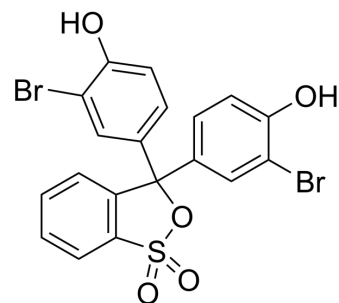


Bromophenol red (sultone form)

Cat. No.:	HY-D0011A
CAS No.:	2800-80-8
Molecular Formula:	C ₁₉ H ₁₂ Br ₂ O ₅ S
Molecular Weight:	512.17
Target:	Fluorescent Dye
Pathway:	Others
Storage:	Please store the product under the recommended conditions in the Certificate of Analysis.



BIOLOGICAL ACTIVITY

Description

Bromophenol red (sultone form) is a chemical indicator. It has been shown to bind to lysozyme and inhibit its activity against the bacterial cell wall, but not the polysaccharide component of peptidoglycan.

REFERENCES

[1]. Yu X, et al. Employment of bromophenol red and bovine serum albumin as luminol signal co-enhancer in chemiluminescent detection of sequence-specific DNA. *Talanta*. 2016;148:264-71.

Caution: Product has not been fully validated for medical applications. For research use only.

Tel: 609-228-6898

Fax: 609-228-5909

E-mail: tech@MedChemExpress.com

Address: 1 Deer Park Dr, Suite Q, Monmouth Junction, NJ 08852, USA