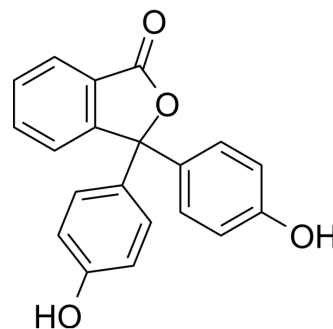


Phenolphthalein

Cat. No.:	HY-D0211
CAS No.:	77-09-8
Molecular Formula:	C ₂₀ H ₁₄ O ₄
Molecular Weight:	318.32
Target:	Fluorescent Dye
Pathway:	Others
Storage:	4°C, protect from light * In solvent : -80°C, 6 months; -20°C, 1 month (protect from light)



SOLVENT & SOLUBILITY

In Vitro

DMSO : ≥ 50 mg/mL (157.07 mM)
* "≥" means soluble, but saturation unknown.

Preparing Stock Solutions	Solvent Concentration	Mass		
		1 mg	5 mg	10 mg
	1 mM	3.1415 mL	15.7075 mL	31.4149 mL
	5 mM	0.6283 mL	3.1415 mL	6.2830 mL
	10 mM	0.3141 mL	1.5707 mL	3.1415 mL

Please refer to the solubility information to select the appropriate solvent.

In Vivo

- Add each solvent one by one: 10% DMSO >> 40% PEG300 >> 5% Tween-80 >> 45% saline
Solubility: 2.5 mg/mL (7.85 mM); Clear solution; Need ultrasonic
- Add each solvent one by one: 10% DMSO >> 90% (20% SBE-β-CD in saline)
Solubility: 2.5 mg/mL (7.85 mM); Clear solution; Need ultrasonic
- Add each solvent one by one: 10% DMSO >> 90% corn oil
Solubility: 2.5 mg/mL (7.85 mM); Clear solution; Need ultrasonic

BIOLOGICAL ACTIVITY

Description

Phenolphthalein is a widely applied but toxic indicator dye.

REFERENCES

[1]. Fleischmann C, et al. Color indicator for supramolecular polymer chemistry: phenolphthalein-containing thermo- and pH-sensitive N-(Isopropyl)acrylamide copolymers and β-cyclodextrin complexation. *Macromol Rapid Commun.* 2013 Jul 12;34(13):1085-9.

Caution: Product has not been fully validated for medical applications. For research use only.

Tel: 609-228-6898

Fax: 609-228-5909

E-mail: tech@MedChemExpress.com

Address: 1 Deer Park Dr, Suite Q, Monmouth Junction, NJ 08852, USA