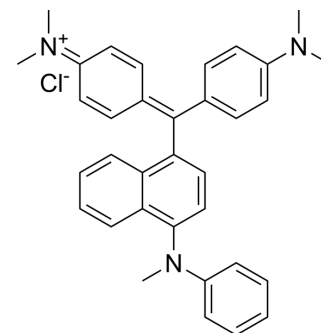


C.I. Basic Blue 8

Cat. No.:	HY-D0319
CAS No.:	2185-87-7
Molecular Formula:	C ₃₄ H ₃₄ ClN ₃
Molecular Weight:	520.11
Target:	Fluorescent Dye
Pathway:	Others
Storage:	Please store the product under the recommended conditions in the Certificate of Analysis.



BIOLOGICAL ACTIVITY

Description
C.I. Basic Blue 8 is a basic dye.

REFERENCES

[1]. Luo Y, et al. A sensitive surface-enhanced Raman scattering method for chondroitin sulfate with Victoria blue 4R molecular probes in nanogold sol substrate. *Luminescence*. 2018 Feb;33(1):131-137.

Caution: Product has not been fully validated for medical applications. For research use only.

Tel: 609-228-6898

Fax: 609-228-5909

E-mail: tech@MedChemExpress.com

Address: 1 Deer Park Dr, Suite Q, Monmouth Junction, NJ 08852, USA