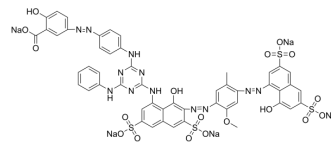


## C.I. Direct green 26

Cat. No.:	HY-D0419
CAS No.:	6388-26-7
Molecular Formula:	C <sub>50</sub> H <sub>33</sub> N <sub>12</sub> Na <sub>5</sub> O <sub>18</sub> S <sub>4</sub>
Molecular Weight:	1333.08
Target:	Fluorescent Dye
Pathway:	Others
Storage:	Please store the product under the recommended conditions in the Certificate of Analysis.



### BIOLOGICAL ACTIVITY

Description	C.I. Direct green 26 is a good dyeing agent for cotton fabrics.
-------------	---

### REFERENCES

[1]. Sawada K, Ueda M. Adsorption behavior of direct dye on cotton in non-aqueous media[J]. Dyes and pigments, 2003, 58(1): 37-40.

**Caution: Product has not been fully validated for medical applications. For research use only.**

Tel: 609-228-6898

Fax: 609-228-5909

E-mail: tech@MedChemExpress.com

Address: 1 Deer Park Dr, Suite Q, Monmouth Junction, NJ 08852, USA