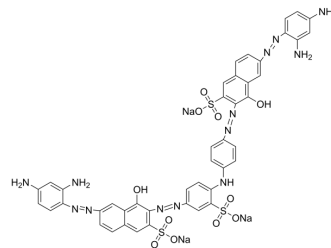


C.I. Direct black 22

Cat. No.:	HY-D0443
CAS No.:	6473-13-8
Molecular Formula:	C ₄₄ H ₃₂ N ₁₃ Na ₃ O ₁₁ S ₃
Molecular Weight:	1083.97
Target:	Fluorescent Dye
Pathway:	Others
Storage:	Please store the product under the recommended conditions in the Certificate of Analysis.



BIOLOGICAL ACTIVITY

Description	C.I. Direct black 22 is a good dyeing agent for cotton fabrics.
-------------	---

REFERENCES

[1]. Sawada K, Ueda M. Adsorption behavior of direct dye on cotton in non-aqueous media[J]. Dyes and pigments, 2003, 58(1): 37-40.

Caution: Product has not been fully validated for medical applications. For research use only.

Tel: 609-228-6898

Fax: 609-228-5909

E-mail: tech@MedChemExpress.com

Address: 1 Deer Park Dr, Suite Q, Monmouth Junction, NJ 08852, USA